



AccountMate 6.0

System Manager

AccountMate 6.0 System Manager is the control center for the entire AccountMate 6.0 accounting system, and must be installed in order to run any of the AccountMate 6.0 modules. AccountMate 6.0 System Manager controls the system environment and setup, on-line help, multi-level password security, printer setup, module and company selection, system date and all pop-up menus. It also initializes the system and has multilingual capability. AccountMate System Manager 6.0 delivers enhanced efficiency, productivity and security to any business.

ACCOUNTMATE 6.0 SYSTEM MANAGER FEATURES

Transaction Rollback Gives Additional Data Protection

This integral System Manager feature guarantees data integrity by ensuring that - if you ever suffer a power failure while a transaction is in process - you will never have incomplete entries or corrupted files. This crucial safety feature offers significant data integrity benefits.

Multiple Levels of Security All the Way Down to Individual Fields

Security is vital to every company, and AccountMate 6.0 System Manager delivers multiple levels of password-based security. You can limit access by company, by module or by function, and you can do this all the way down to individual financial fields or time-of-use by time and day.

On-line Help Screens Always Available

At every level of operation, System Manager provides you with user-friendly Help screens that allow you to search for topics related to any AccountMate 6.0 module, regardless of the module currently being accessed.

No Preprinted Forms Are Needed

You can use the System Manager to print forms for sales order, invoices, packing slips, customer statements and purchase orders, along with the data they contain, on blank paper. You can also print any of this data on preprinted forms.

Perform Multiple Functions without Exiting the Current Function

You can use the System Manager to access other functions without closing the current function. For example, while entering a sale, you can drill down to a customer or inventory file to set up a new customer or inventory record. This speeds up data entry.

Store Data Forever

With the System Manager, data can be maintained for an unlimited number of years, limited only by your available disk space. You can quickly generate reports for any period of any year, instead of having to store to and search through archival data.



Figure 1. Group/User Setup: Add Group Window

Current Login User List

The System Manager provides a list of all users who are currently logged in to AccountMate. When you need to perform a function requiring that no other user be in the system (such as period-end closing or backing up data), this information indicates who still needs to exit.

Export Data to Spreadsheets

Using the System Manager, all data files can be exported to Excel as well as to text files. You can select the data fields you want to export. Filtering criteria can also be set up before the data is exported.

Report Macros Memorize Report Criteria

With the System Manager's report macros, you can record your own report criteria, enabling you to generate reports without having to manually re-select the criteria each time.

Print Batches and Labels the Easy Way

A Print-Batch feature enables you set up batches of reports in convenient cycles for repeated printing. You can set up batches of reports to be printed weekly, at period-end and at year-end. A Print-Label feature lets you print labels for customers, vendors, inventory items and other records.

Table Browser

AccountMate 6.0 provides the ability to browse an entire data file. Password protection is available to prevent unauthorized users from viewing and changing the data.

Password Protection

All users are assigned passwords that can limit their access by day and time, also controlling which functions they can access. Extra protection is available at the field level (e.g., for overwriting customer credit limits or adding and deleting customers).

Supports Multiple Companies

The system can support up to 999 companies, each with its own chart of accounts. Access to companies and functions is password-protected. Data can be copied from one company to another, and this function can also be password protected.

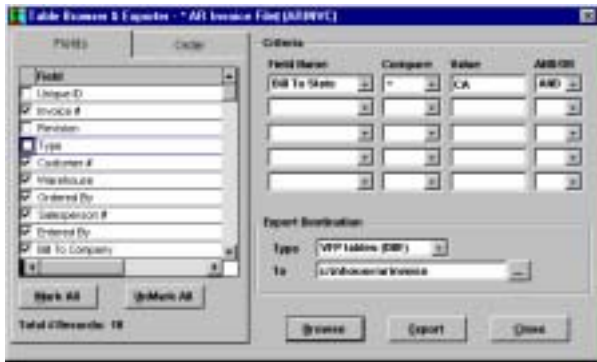


Figure 2. Table Browser and Exporter

Install New Sample Company Databases

With the AccountMate 6.0 System Manager, you now have the ability to install sample company databases as needed. An easy-to-use new menu option allows you to install up to ten sample company databases for each version of software you are running.

Screen Navigation without the Mouse

Using function keys such as F4 and F5, you can navigate throughout AccountMate 6.0 programs without using the mouse. This enables you to speed through data entry in functions such as Accounts Receivable and Accounts Payable.

Hardware & Software Requirements:

Database Server Requirements

CPU	Pentium III 700MHz
Memory	256 MB
Hard Drive	1 GB Free Space
Operating System	Windows 2000 Server/Advanced Server (SP 2) or Windows NT 4.0 Server (SP 6)

Database

(for AccountMate 6.0 for SQL) Microsoft SQL Server 7.0 (SP 2) or Microsoft SQL Server 2000 (SP 2)

Database

for AccountMate 6.0 for MSDE) Microsoft MSDE 2000 (included in the CD)*

* For your convenience, Microsoft MSDE 2000 is included in the AccountMate 6.0 CD. However, users must comply with Microsoft's End User License Agreement when using MSDE 2000. The following links on Microsoft's website provide information on the SQL Server and MSDE licensing model.

<http://www.microsoft.com/sql/howtobuy/sqlserverlicensing.asp>
<http://microsoft.com/sql/techinfo/development/2000/MSDE2000.asp>

File Server Requirements

A file server is optional but recommended for increased performance. You can install the AccountMate 6.0 for SQL application on a file server and have all workstations connect to it, leaving the database server to perform optimally on data processing.

CPU	Pentium III 700MHz
Memory	256 MB
Hard Drive	500 MB Free Space
Recommended O/S	Windows 2000 Server/Advanced Server (SP 2) or Windows NT 4.0 Server (SP 6)
Minimum O/S	Windows 2000 Professional (SP 2) or Windows NT 4.0 Workstation (SP 6)

Note: With this option you do not need to install the AccountMate 6.0 for SQL application on each workstation. You only need to install the runtime library on each workstation. Select the "Compact" installation option during the setup process.

Workstation Requirements

CPU	Pentium II
Memory	128 MB
Hard Drive	200 MB Free Space
Operating System	Windows XP Professional Windows 2000 Professional (SP 2) Windows NT 4.0 Workstation (SP 6) Windows 98 SE (not recommended)